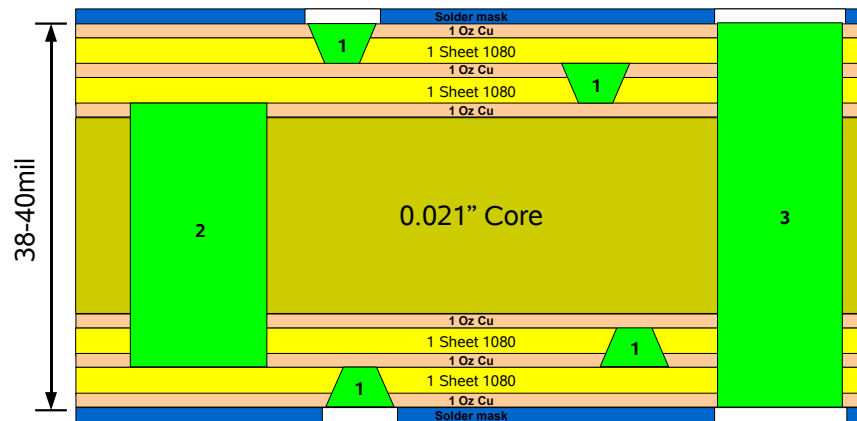


GTA02-core preliminary PCB specifications I

Single Board Size	2.3" x 3.75"	
Panel Array Size	5" x 10 " (4 boards, see array configuration)	
Material	FR4	
Layer	6	
Final Thickness	0.040" (see layer stack up)	
Surface Finish	ENIG	
Copper Weight	1 oz. (inner and outer layers)	
Trace/Space	0.005"	
Inner Layer Clearance	0.010"	
Soldermask	Top & Bottom, standard color	
Silkscreen	Top & Bottom, standard color	
Interconnection	min. Hole/Ring	8mil/4mil (0.2mm/0.1mm)
		<ul style="list-style-type: none"> • microvias (hole size 0.1mm) • buried vias • PTH vias • (see layer stack up)

Layer stack up:

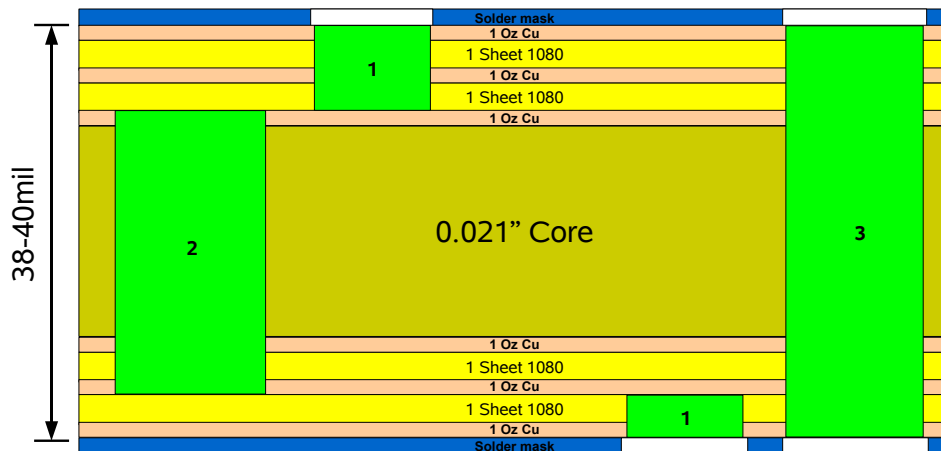


1: microvia, 2: buried via, 3: plated through hole via

GTA02-core preliminary PCB specifications II

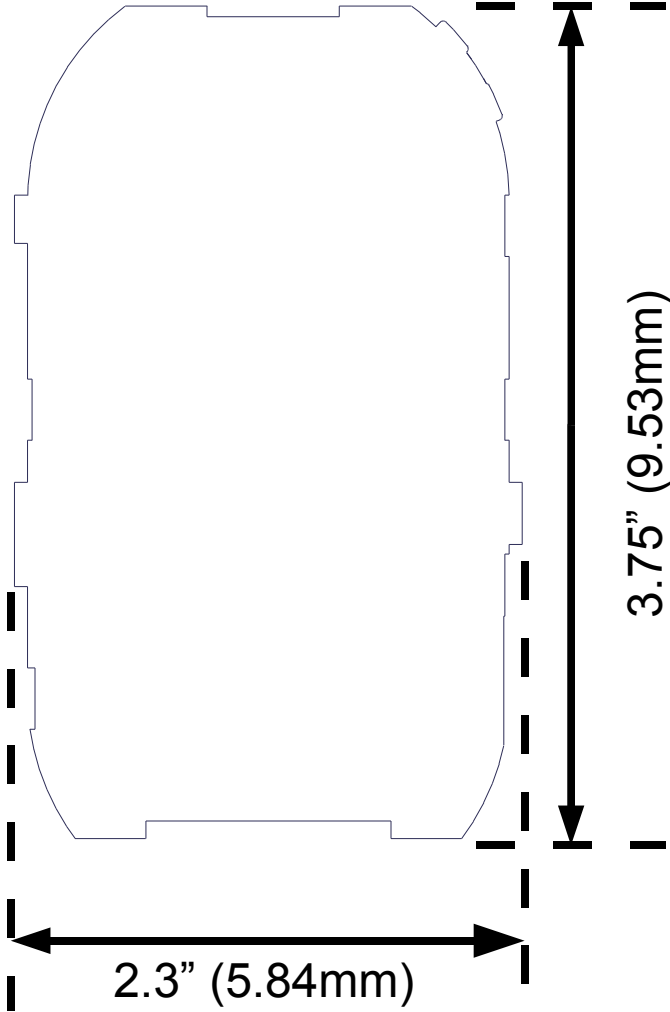
Single Board Size	2.3" x 3.75"	
Panel Array Size	5" x 10 " (4 boards, see array configuration)	
Material	FR4	
Layer	6	
Final Thickness	0.040" (see layer stack up)	
Surface Finish	ENIG	
Copper Weight	1 oz. (inner and outer layers)	
Trace/Space	0.005"	
Inner Layer Clearance	0.010"	
Soldermask	Top & Bottom, standard color	
Silkscreen	Top & Bottom, standard color	
Interconnection	min. Hole/Ring	8mil/4mil (0.2mm/0.1mm)
		<ul style="list-style-type: none"> • blind vias • buried vias • PTH vias • (see layer stack up)

Layer stack up:



1: blind via, 2: buried via, 3: plated through hole via

Board Dimensions



PCB Array Configuration

